

[®] **O**gauge *CRYOLINK*



**Custom cryo level monitoring
with precision**

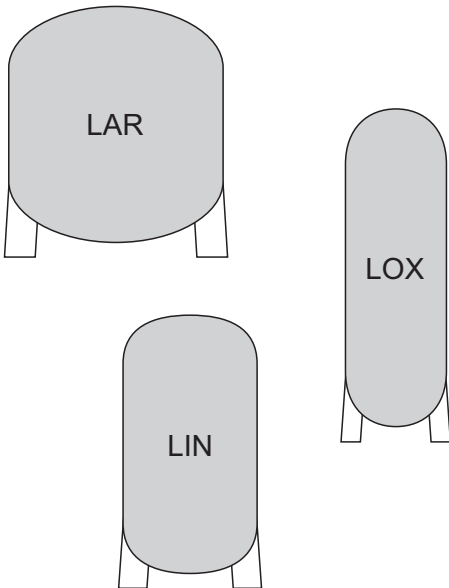
With One O gauge



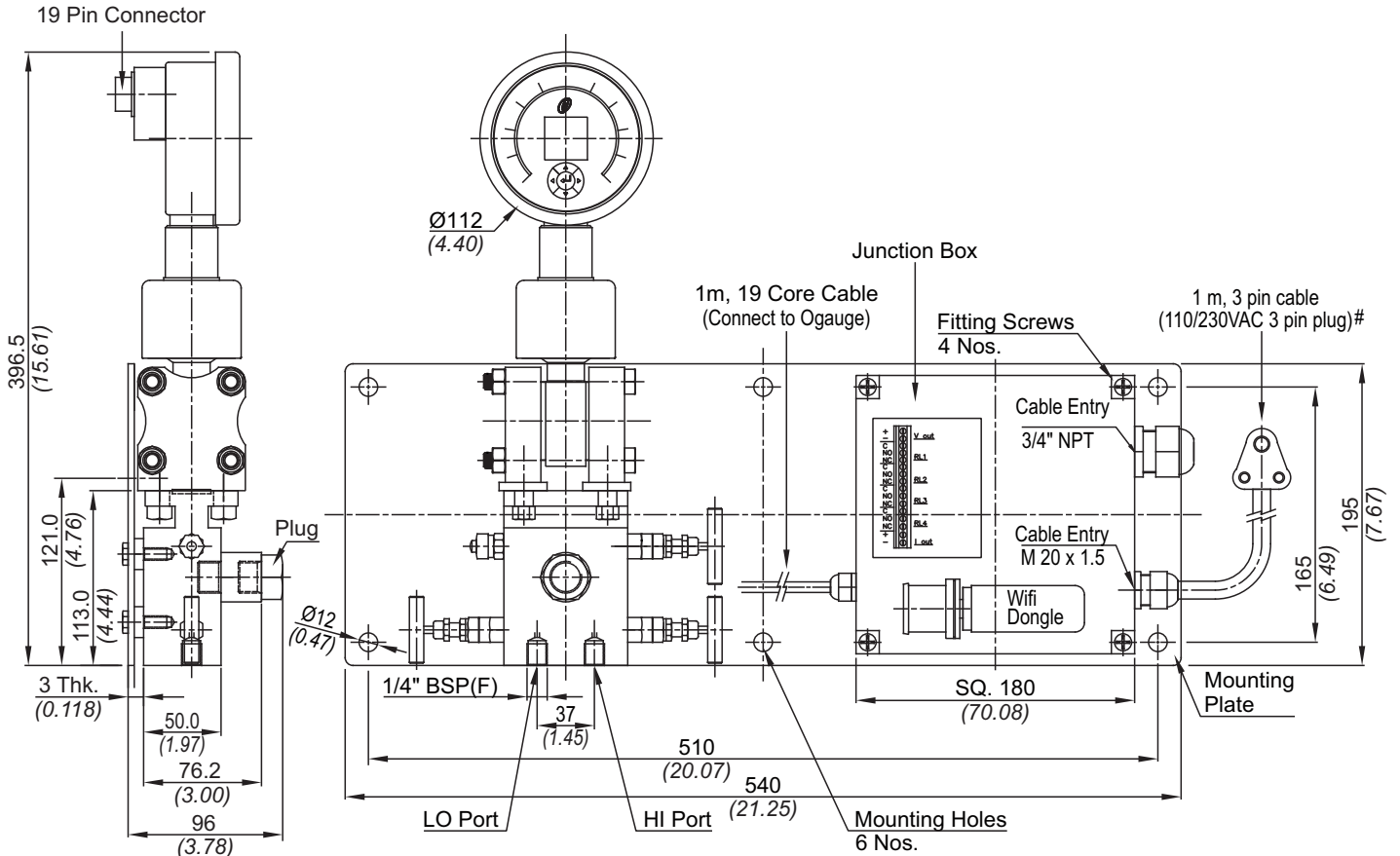
KEY FEATURES

- 4 Relay o/p for onsite alarms
- 2 Analog o/p
- Access tank data from anywhere
- Easy mobile app config.
- Telemetry data transfer via 4G/LTE/Wifi
- Predictive maintenance
- In-built data logger
- Encrypted data transfer
- Customised data logging intervals

SUITABLE FOR BULK TANKS



GA DRAWING



APPROX. DIMENSIONS IN $\frac{\text{mm}}{\text{inches}}$

a suitable adaptor for 3 pin plug can be provided to use with 110 VAC

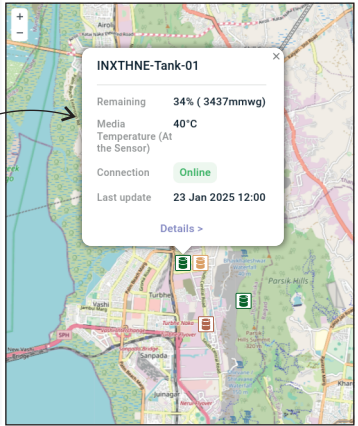
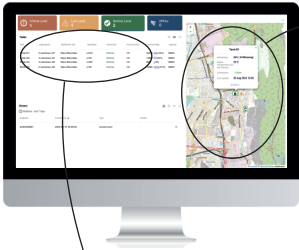
TECHNICAL DATA

- **ΔP range** : 0 ~ 2.5 bar (0 ~ 36.26 psi)
- **Pressure range** : 0 ~ 100 bar (0 ~ 1450.38 psi)
- **Over pressure limit** : 160 bar (2320.60 psi)
- **Protection degree** : IP66
- **Relay Elec. rating** : 5A, 250VAC
- **Analog o/p** : mA & VDC
- **Manifold options** : 3-way valve and 5-way valve*
- **Power supply specs** : 8...32 VDC; 110/230 VAC mains
- **Accuracy** : ± 0.05% F.S.@22°C (71.6°F)
- **Operating temp.:** (-)40°C ~ (+)85°C [(-)40°F ~ (+)185°F]
- **Weight** : 10.7kg (23.8 pounds)**

*Contact sales office for GA drawing of manifold with 5-way valve.

**Weight for the assembly as shown in the GA drawing above.

DASHBOARD



Critical Level
1

Low Level
1

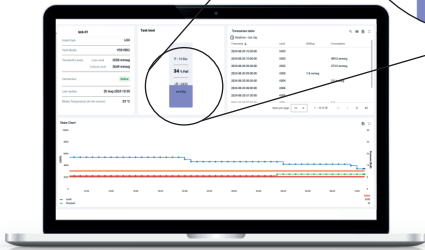
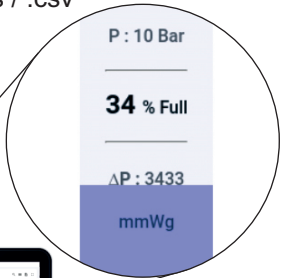
Normal Level
2

Offline
0

Tanks 🔍 ☰ ⌵

Tank	Organization	Distribution Unit	liquidType	Connection	Pressure (bar)	Level (mmWg)	Capacity
Tank-01	Customer-01	Navi Mumbai	LOX	Online	10	3430 34%	9993
Tank-02	Customer-01	Navi Mumbai	LIN	Online	10	1999 22%	9993
Tank-03	Customer-02	Navi Mumbai	LAR	Online	10	890 9%	9993
Tank-04	Customer-03	Navi Mumbai	LIN	Online	10	5096 51%	9993

- Monitor level & pressure of multiple tanks
- Role based access of data to clients
- Automate refilling process, ERP integration
- Email alerts for refill, fall in level & high pressure
- Download tank data in .xls / .csv



ORDERING CODE

Model	ΔP range in bar (psi)	Junction box options	Manifold
OGC	D02 = 0 ~ 1.5 (0 ~ 21.76) D03 = 0 ~ 2.5 (0 ~ 36.26)	0 = No JB 1 = JB + ADC + Dongle 2 = JB + ADC 3 = JB + Dongle	M0 = No manifold M1 = 3-way valve M2 = 5-way valve

JB = Junction Box ADC = Alternate DC supply



Applicable harmonized standards:

- Under EMC Directive,
 1. EN 61326
 2. EN 61326-2-3
- Under RoHS Directive,
 1. EN 50581
- Under Radio Equipment Directive,
 1. ETSI EN 301 489-1 V2.1.1
 2. ETSI EN 301 489-17 V3.1.1
 3. ETSI EN 300 328 V1.9.1 (2015-02)

***Note :** As efforts are made constantly to improve both design and method of manufacture, the apparatus supplied may differ in detail from illustration and data printed. Please check the specifications while ordering*

Kaustubha Udyog

AN ISO9001:2015 COMPANY



Certificate No.: FM 72815

S. No. 36/1/1, Sinhgad Road, Vadgaon Khurd,
 Near Lokmat Press, Pune 411 041 INDIA
 Tel.: +91-(0) 20-24393577 / 24393877
 Telefax : +91-(0) 20-25460486 / 24393577
 Email : sales@ogauge.io

Website : <http://www.ogauge.io>